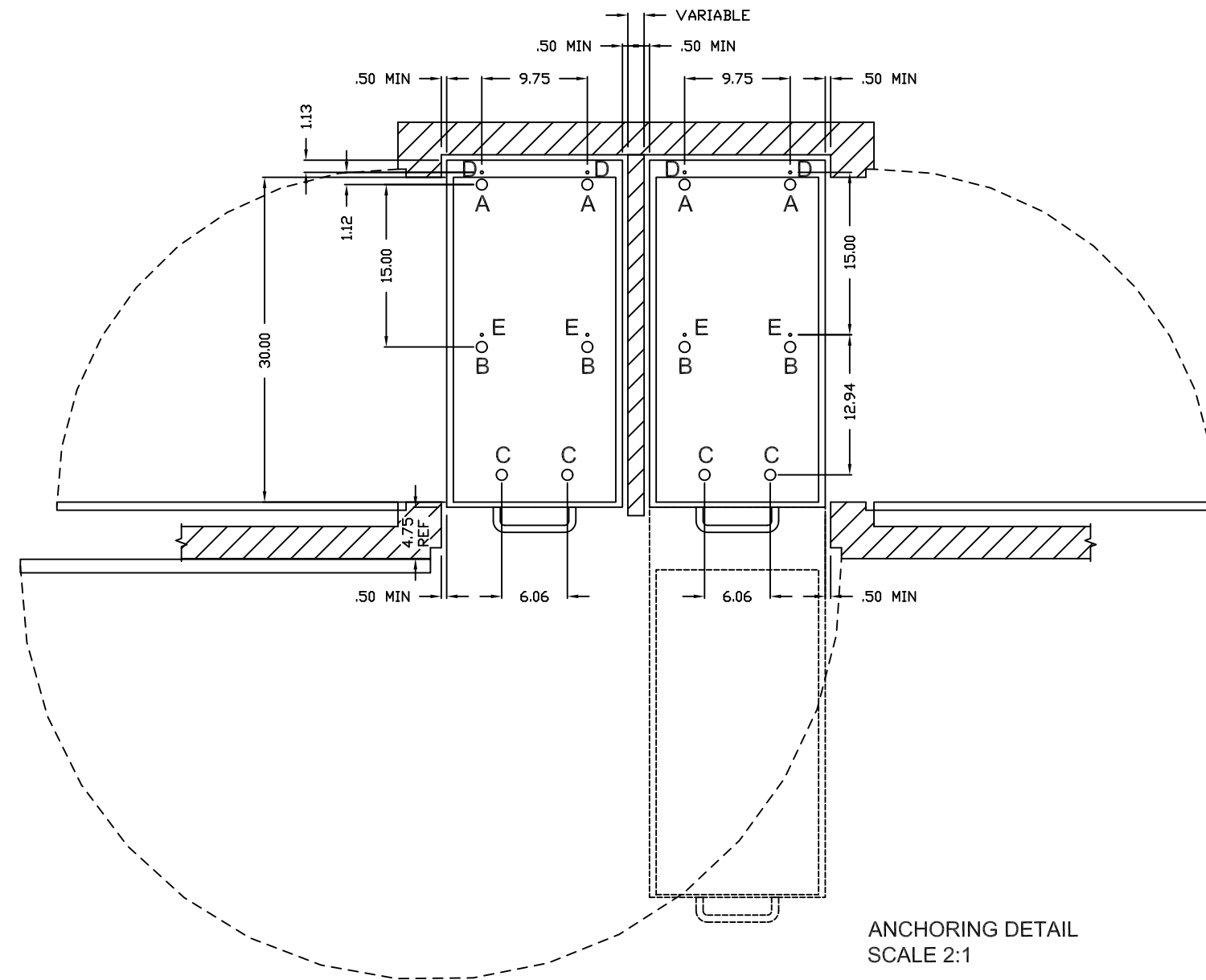


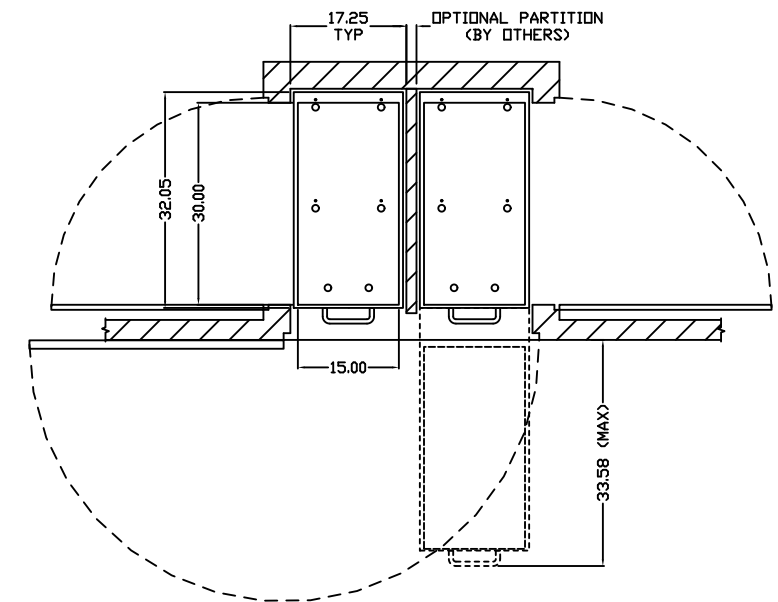
ENCLOSURE CONSTRUCTION GUIDELINES

NOTES:

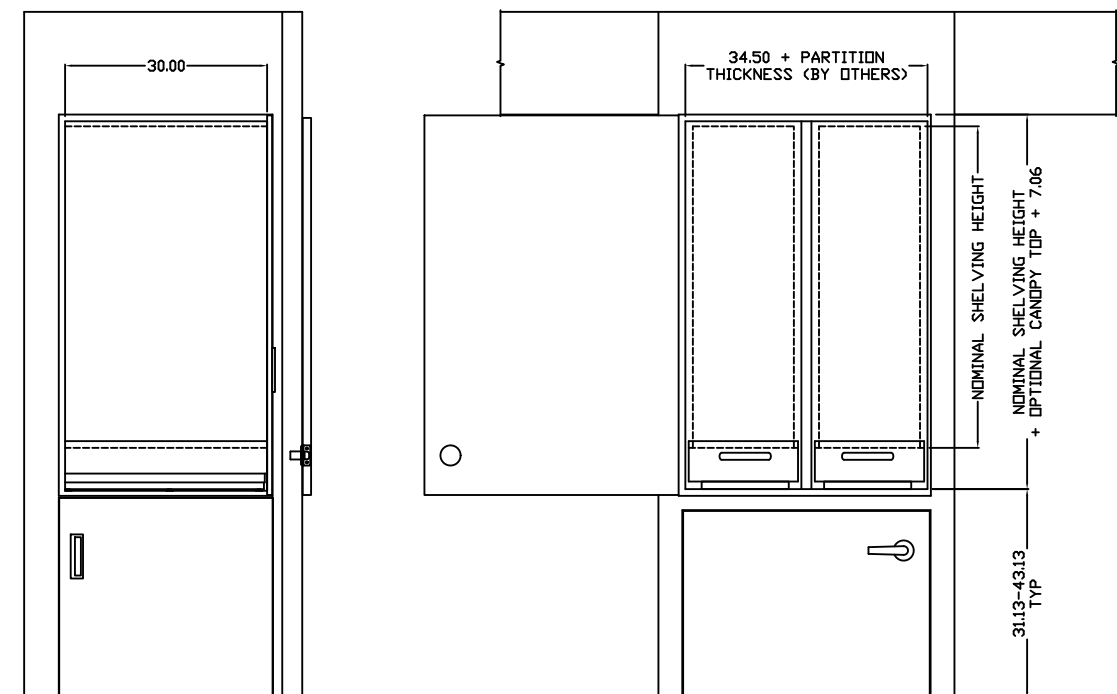
- 1.) CABINET/CLOSET AND MOUNTING SURFACE BY OTHERS.
- 2.) LOCAL FIRE CODES MAY APPLY. THE RESPONSIBILITY TO ENSURE APPLICABLE CODES HAVE BEEN MET IS THAT OF OTHERS.
- 3.) DOORS, WALLS, AND WALL THICKNESSES SHOWN ARE FOR ILLUSTRATIVE PURPOSES ONLY. ACTUAL DIMENSIONS TO BE FINALIZED BY OTHERS.
- 4.) DIMENSIONS SHOWN ARE TO PROVIDE FINISHED OPENING SIZES ONLY AND INCLUDE RECOMMENDED MINIMUM CLEARANCES.
(DIMENSIONS SUBJECT TO CHANGE WITHOUT NOTICE.)



SPLIT DOUBLE
2 - 15 x 30 BASE UNIT CARRIAGES



FINISHED OPENING



FORCES AT BOLT POINTS & FOOT POINTS

			"WORST CASE" FORCE REQUIREMENTS				
SYSTEM CONFIG	CARRIAGE WIDTH	CARRIAGE LENGTH	LEVELER 'A' SUPPORT	LEVELER 'B' SUPPORT	LEVELER 'C' SUPPORT	ANCHOR 'D' (PULL OUT)	ANCHOR 'E' (PULL OUT)
DUAL ENTRY DUAL CARR	15"	24"	400#	74#	900#	350#	650#
	15"	30"	400	74	900	350	650
	15"	33.7"	400	74	900	350	650
	15"	36"	400	74	900	350	650

*FORCES CALCULATED PER BOLT
(SHELF WEIGHT = 15lb/ft LENGTH-WIDTH, UNIFORMLY DISTRIBUTED)
ANCHORS TO BE Ø 5/16"-18 GRADE 5 THREADED BOLTS
DO NOT USE WOOD AS A MOUNTING SUBSTRATE TO AVOID LONG TERM INDENTING

TOLERANCES UNLESS OTHERWISE SPECIFIED

.XX±.01

.XXX±.005

X°±1°



TITLE

CoreSTOR™ PATIENT SERVER
SPLIT DOUBLE 15 X 30 GUIDE

DWN BY	SRI	DATE	1/26/09
		APVD	DATE

SIZE	FSCM NO.
D	58928

DWG NO.	CoreSTOR SD 15x30
---------	-------------------

COPYRIGHT © 19____ SPACESAVER CORPORATION. ALL RIGHTS RESERVE.
This material is proprietary and confidential, and the disclosure, reproduction (by photocopy, film, blueprint or otherwise) or incorporation into any information retrieval system without first receiving written approval from Spacesaver Corporation is expressly prohibited by law.